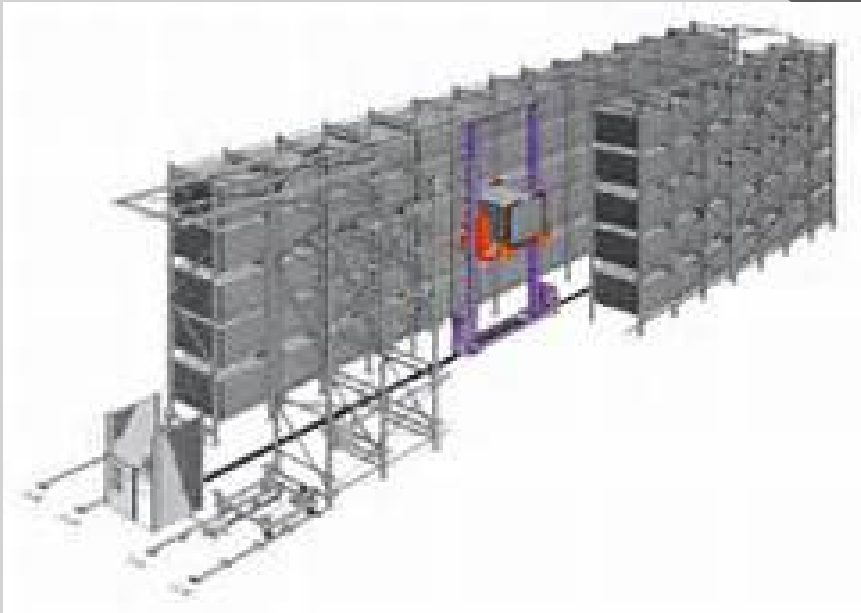


# Automated Storage and Retrieval System

By Tim Rigney



# Who?

- The Automated Storage and Retrieval System was created by Jerome ("Jerry") Lemelson .



# What?

- Retrieval starts when the computer receives an order of a product and its quantity.
- Then the computer maps a path and schedules a retrieval.



# When?

- The Automated Storage and Retrieval system was created and first used 1970.



# Where?

- The AS/RS was invented by Jerry in New York City.



# Why?

- To make storing and retrieving more efficient.
- Before people actually had to go manually retrieve the product.



# Reference

- ◉ [http://en.wikipedia.org/wiki/Automated\\_Storage\\_and\\_Retrieval\\_System](http://en.wikipedia.org/wiki/Automated_Storage_and_Retrieval_System)
- ◉ <http://web.mit.edu/~invent/w-lemelsonbio.html>